

SIMPLY CLEVER



**Škoda**Roomster



**There's a whole other world out there. It's a world full of light and space.** It's a world of broader horizons and fresher perspectives. It's a world where there's room to think and room to breathe. It's a world where there's room to live. The adventure begins long before you arrive. It begins when you set out on the journey. Are you ready to take that first step? Are you ready to find your own room?

4-9	perspectives & design
10-13	technology
14-17	safety
18-23	comfort
24-30	equipment
31	technical specifications
32-33	Roomster Scout
34	accessories
35	general information



## perspectives & design

**Can you combine the stylish with the practical? Can you design for the everyday and still produce a car that's distinctive and filled with character?** Can passengers have their comfort and drivers have their fun? These were the questions Škoda's engineers asked themselves, and the Roomster is the answer to them. From these simple considerations has come a car that is built around you and your needs. One that relishes every challenge that comes its way. It's a design philosophy we call "Room For Life" and it's resulted in a car that has more than enough room for yours.







1.



2.



3.

## “Enjoy a new perspective”

**1. The raised cinema seating in the rear** is the best place to enjoy a unique view of the world. Ease back and lose yourself in the panoramic views and experience those magic moments when life unfolds before you like a movie.

**2. Extra large side windows** make the interiors look more spacious, giving the rear seat passengers an unrestricted view of the world fleeting by.

**3. The new concept of the Roomster model** provides a unique solution to the spacious interior with regard to originality as well as to your needs and wants. Things are different in the world of the Roomster. Everywhere you turn, there's a fresh angle, a different slant, an unexpected twist. Take another look. You'll be surprised by what you find.

**4. The panoramic roof** is made of laminated glass, which prevents excessive heat inside the car while also protecting you from ultraviolet rays. The 0.82 m<sup>2</sup> glass area amplifies the feel of airiness and spaciousness. If needed, the entire glass area can be shaded from inside using two roller blinds.



4.



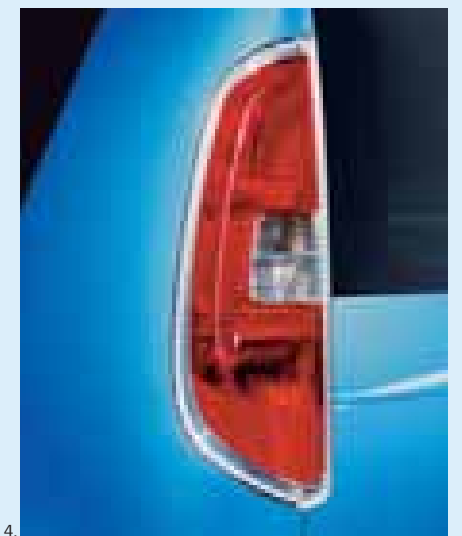
1.



2.



3.



4.

## “A design for life”

**1. The front headlamps and fog lamps** give the car an amiable appearance. Thanks to the smooth transition between the lamp and the bumper, the car's front is totally compact.

**2. The front grille** with vertical bars and Skoda logo is not only a traditional feature but also a typical mark of all Skoda cars currently manufactured. The Roomster is no exception as it self-assuredly acknowledges its heritage.

**3. Rear door handles** are integrated into the dark window columns, so the car's design stays undisturbed.

**The lengthwise roof railing**, which accentuates the car's attractive curves, is available either in elegant black or in exclusive silver\*.

**4. Rear lights** are positioned high in the window columns. This solution is both eye-catching in terms of design and useful in

terms of the maximum possible size of the rear door. The “C” shape of the tail light, typical of Skoda cars is included in the Roomster as well.

Little and big boys alike collect model cars. This is why we have the Roomster available for you (scale 1 : 43) in 14 colours.



\* Available from 1st January 2008.

technology

**"Room For Life" also means room for modern technology.** It ensures that a stylish vehicle is no less practical, comfortable and safe for everyday use. There is technology behind almost every detail, enabling perfect functionality throughout and the solid performance of the car as a whole.





## “Real life technology”

**1. The High-line instrument panel** features 4 analogue indicators, 19 indicator lights, segment display (distance travelled, time) and a large MaxiDOT display showing data from the on-board computer such as outdoor temperature, fuel consumption and mileage. The MaxiDOT further displays easily legible information on fuel reserve, oil pressure, cooling liquid level etc. The advantages of the MaxiDOT include the ability to communicate information from the radio, telephone and navigation system.

**2. Cruise control** will be welcome equipment for drivers who often take long trips on motorways. Controlling it is easy: when you are driving at a speed that you wish to maintain, just set it with a light touch of your finger on a little lever beneath the steering wheel.

**3. The control module beneath the steering wheel** is designed for simple control of the main functions of the car radio and mobile phone. This innovation not only increases the

driver's comfort, it also contributes significantly to overall driving safety.

**4. An audio jack**, included with every Beat or Dance radio, will let you use your iPod, CD or MP3 player, walkman, DVD player or PDA in your car.

**5. The GSM phone and hands-free set preparation** are available in both traditional wired and wireless Bluetooth versions. Phone adapters are listed among Skoda Genuine Accessories.

**6. The navigation system** with dynamic TMC module, featuring monochromatic display with green backlight, enables reception of traffic information en route and adjustment of the planned route accordingly. It provides both vocal and graphical instructions. The navigation system includes an RDS-equipped AM/FM receiver, CD and MP3 player, connection to a CD changer as well as input jack for the mobile phone hands-free set.

**7. The 1.6 16V/77 kW** is the most powerful petrol engine designed for the Roomster. Its properties will suit all drivers who require a sufficiently powerful engine in all circumstances. Other available petrol engines include the 1.2 HTP/51 kW and 1.4 16V/63 kW.

**8. The 1.9 TDI PD/77 kW** engine is the top-of-the-range diesel engine for the Roomster. It is also available with a DPF (Diesel Particulate Filter). You can also select

one of two available 3-cylinder diesel engines: the 1.4 TDI/51 kW or 1.4 TDI/59 kW.

**9. Automatic transmission** is available for the 1.6 16V/77 kW petrol engine version.

Even the car for youngest drivers, the Bobby car, offers a great driving experience. It's no wonder, it's a Roomster after all.





## safety

**Getting the most out of life isn't just about the desire for more.** It's also about a feeling of security, a confidence that something solid and reliable is behind you, protecting you and looking after your best interests. That's why Škoda's engineers make safety their number one design priority. Because a car doesn't just carry your shopping and luggage – it carries everything that's most precious in your life.





## “Safer living”

**1. Driver and passenger airbags** have become the basic elements of passive car safety.

**2. Side airbags** are conveniently concealed in the backrests of the front seats and protect the driver and passenger in the event of a side collision.

**3. Head airbags**, which protect passengers sitting in front as well as in the rear seats, will be required by those who don't leave anything to chance.

**4. Child seats**, available from Škoda Genuine Accessories, have passed safety tests with flying colours so they are highly recommended.

**5. The VIN plate** (Vehicle Identification Number) includes the body number and serves to identify the car. It's placed at the edge of the windscreen together with a bar code which can be retrieved using a special scanning device.

**6. Laser-etched VIN codes** can be found both

on the side and rear windows of the car.

**7. Rear parking sensors** provide very useful assistance to those who often park in cities.

**8. Front fog lamps with the “Corner” functionality** will come in very handy when turning on unlit junctions or parking in the dark where there is a danger of damaging the body or wheels on the kerb.

**9. The “Corner” functionality**, which is dependent on the lit headlamps and indicators, individually activates the left or right front fog lamp at speeds of up to 40 kph (25 mph).

**10. The Electronic Stability Programme (ESP)** stabilises the car when negotiating a bend and counters the tendency to skid. **The Anti-Slip Regulation (ASR)** prevents the driven axle wheels from slipping when accelerating or driving on a wet or icy surface.

**11. Locking the car from the inside** using the central lock protects your possessions from theft when stopping at traffic lights or while driving slowly through heavy traffic. The door locks disengage after pressing the control button or by opening the driver door.

**12. Passenger airbag deactivation** is an essential feature for all who wish to have their child in a front passenger side child seat.

**13. Interior monitoring deactivation** is a practical feature for cars equipped with an alarm.

**14. Tyre pressure checking** is provided by the TPM (Tyre Pressure Monitoring) system, which employs the ABS (Anti-lock Braking System) sensors. Any decrease in tyre pressure is manifested by a change in revolution speed of the under-inflated tyre compared to the others. The discrepancy is then indicated by a light on the instrument panel.

comfort

**It's the end of a long day. Or the beginning of a long journey. You need a place to rest, recuperate, and clear your mind.** In today's world, the car has become that oasis – your chance to relax, be happy and make time for yourself. That's why, beyond its absolute practicality and reliability, the Roomster is all about delivering that comfort and reassurance, as well as delivering you to your destination with a smile on your face.





1.



2.



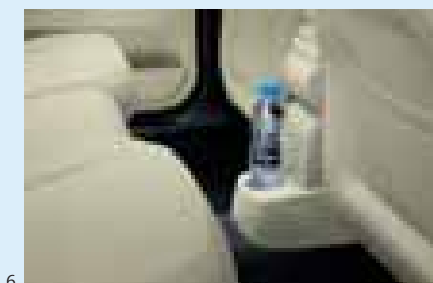
3.



4.



5.



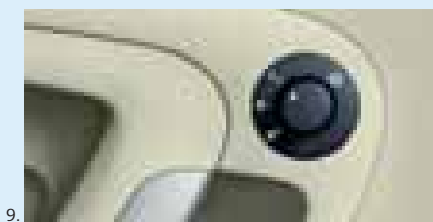
6.



7.



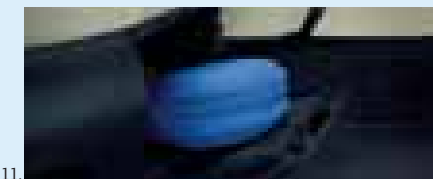
8.



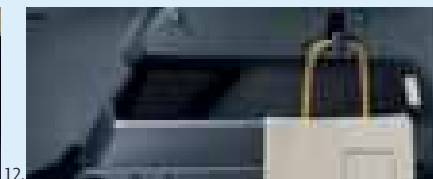
9.



10.



11.



12.

## "A new world of comfort"

**1. Your "Driving Room"** is designed in such a way that you have all necessary controls at your fingertips and can concentrate fully on driving. The dashboard is attractive while still simple and easy to navigate.

**2. The rear reading lamp** illuminates the "Living Room" without impairing the driver's view in any way.

**3. The sunglasses compartment**, positioned in

the ceiling, is recommended to those who want their glasses always at hand. Both the driver and front passenger have at their disposal vanity mirrors placed in the sun shields.

**4. Storage compartments** situated right in the dashboard are either open or closed, depending on the version. In addition the lower compartment is illuminated.

**5. An adjustable armrest** between the front

seats not only contributes to a higher level of comfort for driver and front passenger but can also serve as another storage compartment for 1.2 l of your valuables.

**6. The central console drinks holder** is a welcome addition for the seat passengers, easily accessible for the seat passengers as well.

**7. A 1.5l bottle holder** is included in the storage compartments on both the driver and passenger

door panelling. It also includes a handy rubber band which can hold larger maps and so on.

**8. Foldable table on rear central armrest with a drinks holder** increases the rear passengers' level of comfort.

**9. Electrically adjustable heated external mirrors** are a pleasant and useful feature no matter which season it is. It will provide you with a perfect view of the traffic behind which will

largely contribute to your safer driving.

**10. A 6-CD changer** is conveniently stowed under the storage compartment at the bottom of the dashboard facing the front passenger seat.

**11. Drawers with tilting lids** situated under the front seats provide storage space for small objects.

**12. The tilting hook**, located on either side of the luggage compartment, is a detail enhancing the car's functionality.

**Heated front seats** are for all those who wish to indulge in extra comfort. **The height-adjustable driver seat** (and optionally front passenger seat) further contributes to a comfortable journey.





# “Find your own room”

**1. The VarioFlex rear seating system** gives the Roomster unrivalled interior flexibility.

**2. The VarioFlex rear seating system diagram** shows all eight interior layout options including when the seats are removed. The system is based on three separate rear seats that can be handled independently of each other. You can change their position or remove any or all of them. In their basic position the side seats can be moved 80 mm forwards or 70 mm backwards. When the middle seat is removed, the two side seats can be moved 110 mm towards the centre. A single person can do all this without any tools.

**3. The flexible partition net in the luggage compartment** can be used to fix various objects. It's a part of the storage package which also includes storage pockets in the rear side door panelling and two open storage compartments above the rear wheel arches.

**4. A set of nets in the luggage compartment** will help you always keep the car tidy. The nets will prevent movement of, and possible damage to, the transported luggage.



With a folding table and chairs, you are ready for a picnic anytime, anywhere.



## equipment

**Your Roomster is much more than just a tool to help you live your life.** It's also an expression of your taste and personality. Colours, accessories, extras – they're all there for you to mix, match and create the perfect blend for you. Life may be full of decisions, but these are ones to enjoy.



“A room of your own”



Pulse interior



Stone Blue

Stone Red

Style Blue

Style Grey

Magic

Roomster



Stone Blue interior  
(Onyx-Onyx dashboard)



Stone Red interior  
(Onyx-Onyx dashboard)



Stone Blue interior  
(Onyx-Silver-grey dashboard)



Stone Red interior  
(Onyx-Silver-grey dashboard)

Style



Style Blue interior  
(Onyx-Onyx dashboard)



Style Grey interior  
(Onyx-Onyx dashboard)



Style Blue interior  
(Onyx-Silver-grey dashboard)



Style Grey interior  
(Onyx-Silver-grey dashboard)

Sport



Magic interior  
(Onyx-Onyx dashboard)

Comfort



Chic interior  
(Onyx-Ivory dashboard)



Chic Night interior  
(Onyx-Onyx dashboard)

Extra equipment



Pulse interior – sports seats



Floss interior –  
fabric/leather/artificial leather



Chic



Chic Night



Pulse



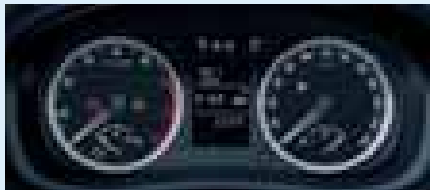
Floss



Basic instrument panel



Instrument panel with on-board computer



High-line instrument panel with MaxiDOT display



**Semi-automatic air conditioning system Climatic:** automatic maintenance of preset temperature of the air inflow, manual regulation of air volume and setting of exhaust.



**Electronically controlled air conditioning system Climatronik:** automatic maintenance of interior temperature, automatic regulation.



**Radio Beat:** AM/FM tuner with RDS, electronic encryption limiting the use of the radio to a specific car, CD changer control functions and input jack for the mobile phone hands-free set. Provided with audio jack.



**Radio Dance:** same as Radio Beat, plus integrated CD and MP3 player, digital signal processor with an equaliser, and a large dot-matrix display conveying messages from the parking sensor. Provided with audio jack.



**Navigation system** with dynamic TMC module: enabling reception of traffic information, RDS-equipped AM/FM receiver, CD and MP3 players, connection to a CD changer, input jack for the mobile phone hands-free set.



4-spoke steering wheel



4-spoke leather steering wheel



3-spoke sports leather steering wheel



5.0J x 14" steel wheels for 175/70 R14 tyres with **Draco** hub covers.



6.0J x 14" steel wheels for 185/60 R14 tyres with **Castor** hub covers.



6.0J x 15" steel wheels for 195/55 R15 tyres with **Hermes** hub covers.



**Atik** alloy wheels 6.0J x 14" for 185/65 R14 tyres.



**Avior** alloy wheels 6.0J x 15" for 195/55 R15 tyres.



**Line** alloy wheels 6.0J x 15" for 195/55 R15 tyres.



**Atria** alloy wheels 6.5J x 16" for 205/45 R16 tyres.



**Bear** alloy wheels 6.5J x 16" for 205/45 R16 tyres.

Roomster cars are equipped with "green tyres". This title does not describe the colour but lower content of substances difficult to recycle.



Colour	Colour code	Roomster		Style		Sport	Comfort		Extra equipment	
		Stone Blue	Stone Red	Style Blue	Style Grey	Magic	Chic	Chic Night	Pulse sports seats	Floss leather/ /artificial leather
Candy White uni	9P9P	●	●	●	●	●	–	●	●	●
Corrida Red uni	8T8T	–	●	–	●	●	●	●	●	●
Dynamic Blue uni	6D6D	●	–	●	●	●	●	●	●	●
Highland Green metallic	7A7A	–	●	–	●	●	●	●	●	●
Olive Green metallic	1S1S	●	●	●	●	●	●	●	●	●
Ocean Blue metallic	T8T8	●	–	●	●	●	●	●	●	●
Flamenco Red metallic	2L2L	–	●	–	●	●	●	●	●	●
Diamant Silver metallic	1B1B	●	●	●	●	●	●	●	●	●
Brilliant Silver metallic	8E8E	●	●	●	●	●	●	●	●	●
Cappuccino Beige metallic	4K4K	●	●	●	●	●	●	●	●	●
Polar Blue metallic	8Y8Y	●	●	●	●	●	●	●	●	●
Storm Blue metallic	8D8D	●	●	●	●	●	●	●	●	●
Black Magic pearl effect	1Z1Z	●	●	●	●	●	●	●	●	●
Anthracite Grey metallic	9J9J	●	●	●	●	●	●	●	●	●
Satin Grey metallic	5T5T	●	●	●	●	●	●	●	●	●

Combinations of body paint and interiors:

● combination available

– combination not recommended

## Technical specifications

Engine	1.2 12V HTP/51 kW	1.4 16V/63 kW	1.6 16V/77 kW	1.4 TDI PD/51 kW	1.4 TDI PD/59 kW	1.9 TDI PD/77 kW
	Petrol engine, inline, liquid cooling system, DOHC, transverse in front	Petrol engine, inline, liquid cooling system, DOHC, transverse in front	Petrol engine, inline, liquid cooling system, DOHC, transverse in front	Turbocharged diesel engine, inline, liquid cooling system, high-pressure direct injection system, OHC, transverse in front	Turbocharged diesel engine, inline, liquid cooling system, high-pressure direct injection system, OHC, transverse in front	Turbocharged diesel engine, turbocharger with self-aligning blades, inline, liquid cooling system, high-pressure direct injection system, OHC, transverse in front
Cylinders/cubic capacity (cc)	3/1,198	4/1,390	4/1,598	3/1,422	3/1,422	4/1,896
Max. performance/revs (kW/min <sup>-1</sup> )	51/5,400	63/5,000	77/5,600	51/4,000	59/4,000	77/4,000
Max. torque/revs (Nm/min <sup>-1</sup> )	112/3,000	132/3,800	153/3,800	155/1,600–2,800	195/2,200	240/1,800, 240/1,900*
Air pollution regulation	EU4	EU4	EU4	EU4	EU4/EU4 + DPF*	EU4/EU4 + DPF*
Fuel	Unleaded petrol, RON 95/91*				Diesel	
Performance						
Maximum speed (km/h)	158	171	184 (179)	158	165	182
Acceleration 0–100 km/h (s)	15.9	13.0	10.9 (12.5)	16.5	14.7	11.5
Fuel consumption 99/100 (l/100 km)**						
– urban	8.7	8.9	9.2 (10.4)	6.4	6.1/6.7*	6.7/6.8*
– extra-urban	5.5	5.6	5.7 (6.2)	4.5	4.5/4.4*	4.6/4.7*
– combined	6.7	6.8	7.0 (7.7)	5.3	5.1/5.2*	5.3/5.5*
CO <sub>2</sub> emissions (g/km)	159	162	167 (185)	139	135/137*	139/145*
Turning circle/clearance turning circle diameter (m)	10.3/10.5	10.3/10.5	10.3/10.5	10.3/10.5	10.3/10.5	10.3/10.5
Power transmission						
Type	Front-wheel drive					
Clutch	Hydraulic single dry clutch disc with membrane spring, asbestos free (hydrodynamic converter)					
Transmission	Manual 5-speed, fully synchronised (automatic 6-speed with Tiptronic manual gear changing – for 1.6/77 kW only)					
Weight						
Kerb weight (kg)**	1,150	1,155	1,175 (1,210)	1,220	1,245	1,260
Payload (kg)**	515	515	515	515	515	515
Total weight (kg)	1,665	1,670	1,690 (1,725)	1,735	1,760	1,775
Roof load capacity	75	75	75	75	75	75
Trailer load w/o brakes (max. kg)	450	450	450	450	450	450
Trailer load with brakes – 12% (max. kg)	700	900	1,000	900	1,000	1,200
Nose weight (kg)	50	50	50	50	50	50
Body						
Drag coefficient C <sub>w</sub>	5-seater, 5-door, 2-compartment 0.33					
Chassis						
Front axle	McPherson suspension with lower triangular links and torsion stabiliser					
Rear axle	Compound link crank-axle					
Braking system	Hydraulic dual-diagonal circuit braking system vacuum assisted					
Front brakes	Disc brakes with inner cooling and with single-piston floating calliper					
Rear brakes	Drum brakes	Drum brakes/disc brakes (versions with ESP)	Disc brakes	Drum brakes	Drum brakes/disc brakes (versions with ESP)	Disc brakes
Steering	Direct rack-and-pinion steering with electro-hydraulic power steering					
Wheels	Roomster: 5.0J x 14" (1.2/51 kW and 1.4/63 kW); 6.0J x 15" (1.6/77 kW and diesel engines); Style and Comfort: 6.0J x 15"; Sport: 6.5J x 16"					
Tyres	Roomster: 175/70 R14 (1.2/51 kW and 1.4/63 kW); 195/55 R15 (1.6/77 kW and diesel engines); Style and Comfort: 195/55 R15; Sport: 205/45 R16					
Liquids						
Tank capacity (l)	55					

Exterior dimensions	Interior dimensions
Length (mm)	Comfort measure front max./min. (mm)
Width (mm)	Comfort measure rear max./min. (mm)
Height (mm)***	Lateral room front/rear (mm)
Wheel base (mm)	Effective head room front/rear (mm)
Track front/rear (mm)****	Luggage storage space (l)
Track front/rear (mm)	– with rear seat backrests upright
Clearance (mm)***	– with rear seat backrests down/out

\* Using low-octane fuel may affect engine performance.

\*\* Standard version model.

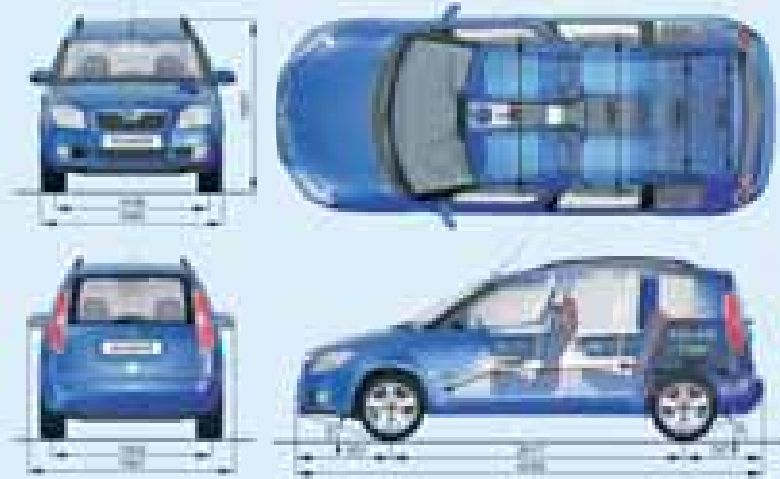
\*\*\* At kerb weight.

\*\*\*\* 1.2/51 kW and 1.4/63 kW engines.

\*\*\*\*\* Depending on the backrest and adjustable rear seat positions.

() Applies to versions with automatic transmission.

\* Applies to versions with DPF (Diesel Particulate Filter).







1.



2.



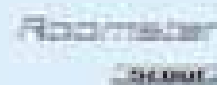
3.



4.



## Roomster Scout



the individuality of the car as well as that of its driver.

**1. The front bumper spoiler** sets the Roomster Scout apart from the crowd. The more robust front also protects the car while driving on bumpy roads. **Front fog lamps** in the original "Corner" design can be equipped with "Corner" functionality for extra safety.

**The Scout badge** placed on the rear of the vehicle symbolises

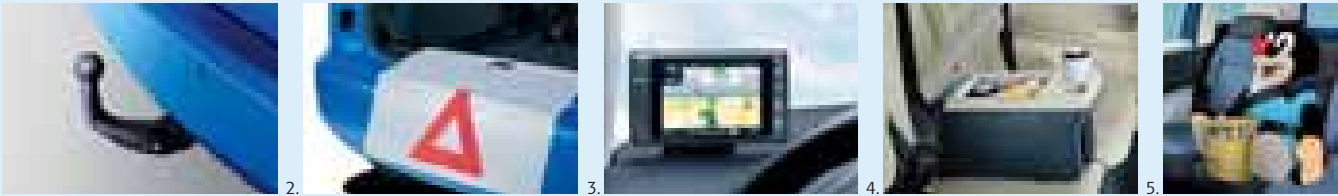
**2. The interior** of the Scout is upholstered in Onyx material as part of the car's standard equipment or you can decide to go for the optional exclusive Floss interior in combination of leather/artificial leather/fabric.

**3. The interior bicycle holder** will primarily enchant sports lovers. If the rear seats are removed, two bicycles can be safely transported. The bicycle holder is available as an optional extra or from Škoda Genuine Accessories.

**4. Arkto**s alloy wheels 6.5J x 16" and **Kenta**ur alloy wheels 7J x 17" (both 5-spoke) feature original design and were developed specially for the Roomster Scout.

You can find more detailed information on equipment, technical specifications and prices at your authorised Škoda partner or in the Škoda Roomster Scout catalogue.

# Škoda Genuine Accessories



## “Gear up for the long trip”

Škoda Genuine Accessories will let you underline the uniqueness of your car while adjusting it to your particular lifestyle. These accessories serve to expand the standard and extra equipment. We offer you various products that increase your vehicle’s comfort as well as utility value ranging from sunblinds through phone adapters to an interior holder for two bicycles. You can obtain further information on the complete range of Škoda Genuine Accessories at any authorised Škoda partner.

1. With a **tow bar**, which is of course removable, your Roomster can pull a trailer weighing up to 1,600 kg, depending on the engine version.
2. **The rear bumper cover foil** with a warning triangle has two functions: to protect the bumper against damage and to warn of a stopped or parked car from a distance.
3. **The portable navigation device ViaMichelin X-950 T** with maps of the majority of European countries is an example of the aptly named

“personal navigation systems”. It can be easily removed from the integrated holder and used outside your car. Installation requires a modification package available as an optional extra.

4. **The car cooling box** with an internal capacity of 6 l, which can be connected to a 12V socket, will come in very handy especially on hot summer days.
5. **The Mole with a storage pocket** will please most the small passengers.

# General information

## ŠKODA SERVICE

Dear Škoda vehicle owners,  
We offer you numerous reasons for visiting your authorised Škoda service partner.

**Quality of the service network and personnel**  
The types of technology we integrate into your vehicle continue to become more and more advanced; therefore, our service personnel must adequately improve their professional knowledge. Authorised service centre workers regularly receive technical and also non-technical training provided by the manufacturer in order to obtain the latest knowledge for their work.

**Quality of the service level monitoring system**  
Our goal is to meet your requirements in the best possible way; that’s why we introduced our new service level monitoring system in our whole sales network – from the manufacturer up to individual service partners. It guarantees a high level of customer care and repair processes.

**Quality of the repair level and customer care**  
Anytime your Škoda vehicle “calls” for service, call us and we will gladly schedule your individual appointment. That will give us enough time for the best possible care. Your Škoda vehicle needs and requires state-of-the-art types of technology. Only technological procedures specified by the manufacturer and the most advanced workshop equipment and diagnostic systems are able to guarantee the flawless operation and reliability of your vehicle.

Our work philosophy is based on the fair and transparent treatment of our customers. Following that philosophy, we set standard time units for vehicle repairs and maintenance. Only this mechanism allows us to provide you with a good repair price estimate. Our authorised Škoda service partners will provide you with a repair price estimate before the work starts. As a result of that, you are informed about the repair price in advance. If your vehicle needs more care than originally expected, our authorised Škoda service partners will immediately inform you and arrange further steps with you so that you always have the costs under control.

**A comprehensive offer of services**  
From time to time your Škoda vehicle needs our expert care, either during its regular maintenance, any repairs or if you wish to purchase or borrow Škoda Genuine Accessories. We are ready for all these situations and we will always take care of both your vehicle and your mobility.

Your authorised Škoda service partner will gladly inform you about our specific offers.

## ŠKODA GENUINE ACCESSORIES

Genuine accessories make every vehicle unique, giving it its own style. The Škoda Roomster comes with very extensive basic equipment; however, some of the additional items can only be purchased as Škoda Genuine Accessories. These items include, for example, child safety seats, roof rails, mobile phone adapters and alloy wheels. The extra equipment offer also extends to mechanical security items and a whole series of items increasing the vehicle’s utility value and individuality. Our catalogue of Roomster equipment contains more detailed information on the Škoda Genuine Accessories range.

## ŠKODA GENUINE PARTS

Škoda Genuine Parts are identical to those used during the assembly of Škoda vehicles. The vehicle manufacturer knows best which part is intended for which functionality and the required parameters it needs to meet unconditionally for the car to function properly.

**Safety**  
Every vehicle component and part has its own purpose and some of them directly determine the safety of the car’s occupants. Our care for safety is proven in, for example, body structure, airbags, safety belts and most importantly in the brake system. The lives of the people in and around the car depend on the quality and operating efficiency of the brakes, especially under extreme conditions.

**Availability**  
Thanks to the large network of authorised Škoda service partners, all Škoda drivers can be assured that they will be able to get the parts they need for their car. Škoda Auto offers a comprehensive range of parts and equipment items that are used in the vehicle’s production, and does not merely focus on high turnover parts. The supply of Škoda Genuine Parts is provided even after the relevant vehicle model is discontinued, and not just for the period specified by law: indispensable components for the operation of the car are supplied to the market for at least 15 years after the discontinuation, car equipment components are supplied to the market for at least 10 years after the discontinuation and components of door lining and carpets are supplied to the market for at least 8 years after the discontinuation.

**Top quality**  
To verify quality parameters, the development department maintains an extensive testing facility including a test circuit with extreme polar and desert conditions, as well as material testing laboratories of the quality control department. Thanks to use of first rate materials and technologies, Škoda Genuine Parts ensure safe and carefree driving. Precise alignment guarantees replacement of worn parts without unnecessary complications.

**Long life**  
The use of first rate materials and top production technologies in the production of Škoda Genuine Parts ensure their maximum reliability and long life.

**Original technical solutions**  
The knowledge gained in production and operation is continuously reflected in the search for new technical solutions aimed at obtaining a truly first-rate product which will meet the customer’s requirements.

**Legislative requirements and certification**  
All Škoda Genuine Parts meet the legislative requirements and are approved by Škoda Auto on the basis of meeting stringent criteria. This way the customer obtains a guarantee that the components installed in their vehicle will be reliable, functional and safe.

**Protection of the environment**  
The Škoda Genuine Parts range includes exchange parts whose production does not burden the environment with waste, excess heat and water pollution to a high degree. Returned parts and aggregates are not discarded but modified for re-use, thus re-utilising a great part of the work and energy invested in the parts during their manufacture.

## INFORMATION ON THE INTERNET

Information is available at [www.skoda-auto.com](http://www.skoda-auto.com) to assist you in deciding which vehicle suits your needs thanks to the detailed descriptions and photographs of all our models. Our Configuration program will let you try various combinations of standard equipment, engine, paint colour, interior, and extra equipment to make sure your new vehicle accurately meets your requirements. This program will also assist you with the calculation of optimum monthly payments during vehicle financing and the selection of a suitable dealer.

## ŠKODA FINANCE

If you select the Škoda Roomster vehicle, ŠkoFIN will assist you with financing it. The ŠkoFIN Company offers programs both for individuals and legal entities. Our Škoda Finance brand product line offers both lease and loan financing. You can contact one of our authorised Škoda partners to arrange and sign an agreement and to learn more about our product offer or the convenient special offers from ŠkoFIN. These are time-limited; however, they bring very unique and interesting benefits.

## FLEET SALES

Whether your car fleet is small or large or whether you are a customer from the business or public sector, Škoda Auto and its authorised dealer network are here for you. We offer products and services tailored to your business and financial needs, including top-quality customer care, a portfolio of services corresponding to the specific requirements of corporate customers and a high quality of cars, accessories and maintenance services, which are a guarantee of low operating and ownership costs of your car fleet.



One of the most important goals of Škoda Auto is the development and production of products that are as environmentally friendly as possible throughout their life cycle phases, placing principal emphasis on the selection of recyclable materials. Our Škoda cars are manufactured using progressive types of technology in modern production facilities that meet the strictest criteria. Anticorrosive protection of the cars' painted parts is based exclusively on lead-free cataphoresis (KTL) and water-soluble paints.

Our company strategy includes limiting fuel consumption and emissions. As a result, the engines of Škoda Auto meet the current emission regulations. We also offer diesel engines with Diesel Particulate Filters (DPF). All products made by Škoda Auto adhere to the laws and regulations concerning the protection of soil and water. As a result of these activities, Škoda cars meet technical, safety, quality and environmental requirements. Škoda Auto contributes to the preservation of a clean environment and provides mobility and comfort to its customers.

The environmental logo expresses Škoda Auto's awareness of responsibility for, and attempts at, the sustainable development of the company and a friendly approach to life and nature.



Some models in this catalogue are shown fitted with extra equipment not necessarily included in the standard equipment. All details of technical specifications, design, equipment, materials, guarantees and appearance were accurate at the time of going to print. However, the manufacturer reserves the right to make any changes

(including changes of technical parameters or individual model equipment). Please consult your authorised Škoda partner for further details on standard and extra equipment, current prices and delivery terms and conditions. This catalogue was printed on cellulose paper which was bleached without using chlorine. The paper is 100% recyclable.

**Your Škoda partner:**